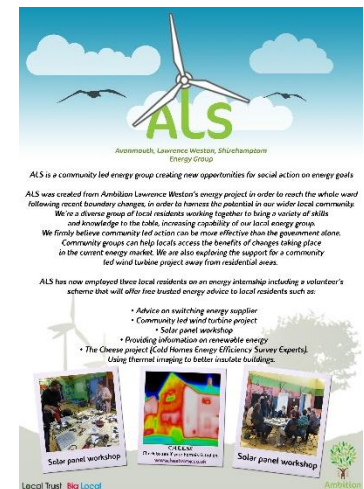
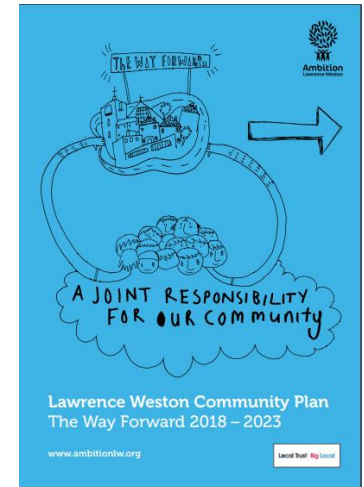
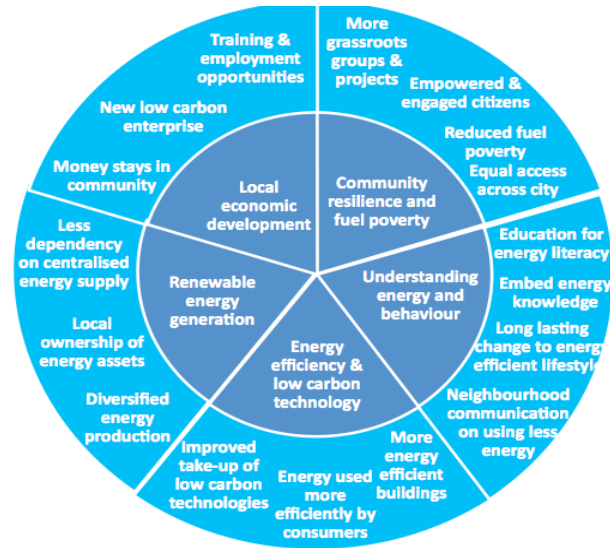


# Bristol's Big Energy Conversation



# Timeline

- 1979 UCAT was launched  
which then became CSE
- 1990s Groups form across the city looking at sustainability
- 2000s neighbourhood groups: eg Easton Energy Group, Bedminster Energy Group
- 2010 BEN first open meeting (setup working groups on retrofit, renewables, community groups)  
Bristol Green Doors first open homes event
- 2011 Bristol Energy Co-op 1<sup>st</sup> share offer  
9 successful Local Energy Assessment Fund projects in Bristol supported by CSE and BEN
- 2012 BEN's first CE conference in Bristol  
UoB Maintaining Momentum research project
- 2013 [Launch Bristol Community Energy Strategy for Energy](#)
- 2014 BEN formalises as CIC and chairs Green Capital energy group
- 2015 Bristol is European Green Capital and energy projects get grants  
BCC secures funding to support development of CE best practice from DECC
- 2016 Bristol Community Energy Fund launched with 12 projects funded in the first round  
– reaching new communities  
4MW solar farm in Lawrence Weston by BEC



# Continued....

2017 [Bristol Community Energy Fund](#) supporting community energy across the city as well as loans to community energy projects to develop new renewable energy assets – Projects are ongoing with reporting completing in 2019 – Bristol Energy Network supporting applicants

2017 [Bristol Energy Coops](#) 1<sup>st</sup> Community benefit fund [MegaWatt Fund](#) – supported by Bristol Energy Network

2018 [Replicate Smart Homes Project](#) – begins completing in 2019

2018 [Energy Transition Conference: Top Down Vs Grassroots](#)

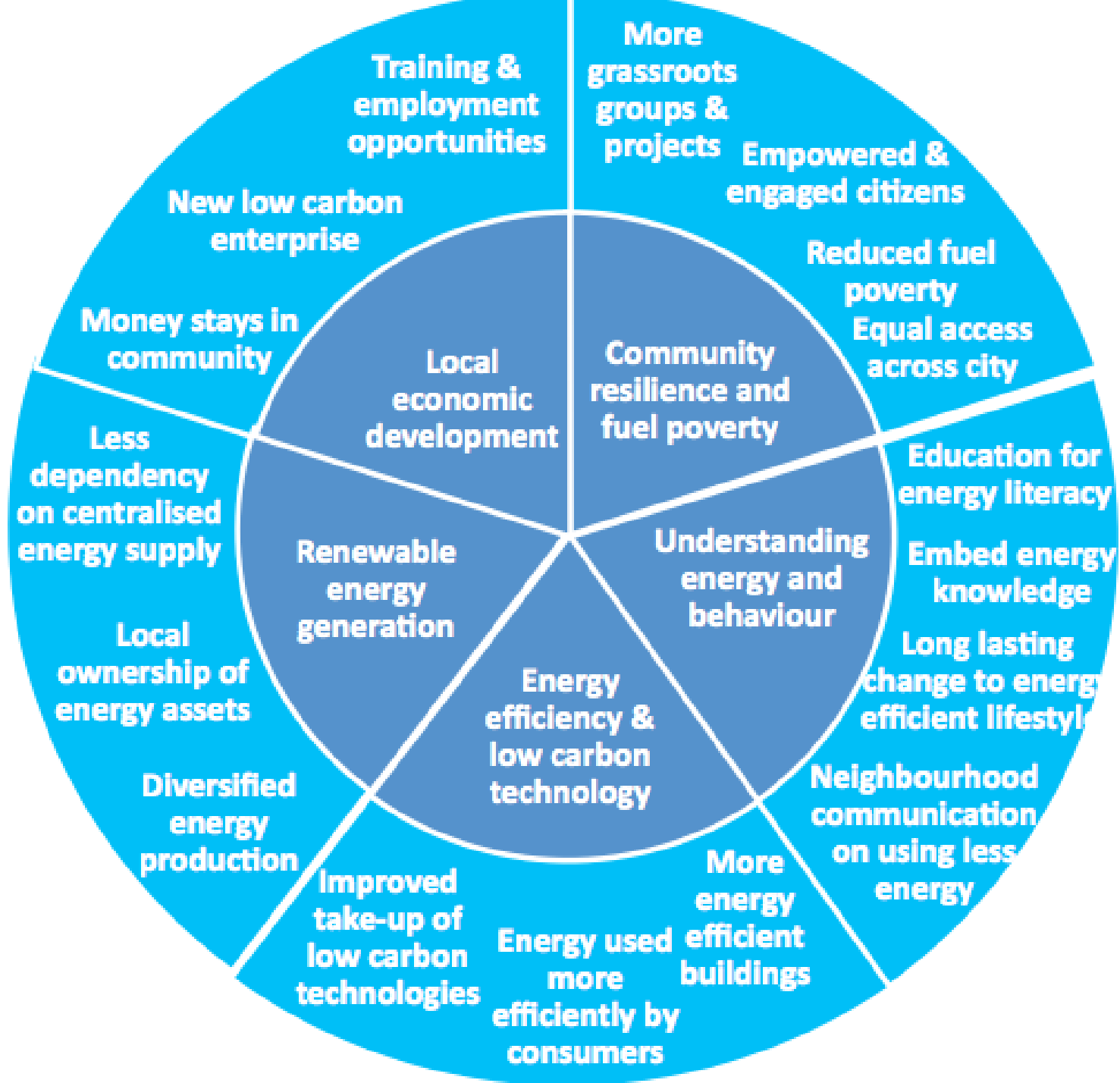
2018 No More Cold Homes – Health Sector Engaged [JSNA Fuel Poverty Chapter](#)

2018 [Setting up Energy Champions](#) – Piloting project in advance of city with Replicate Project

# Bristol Energy Network 2019

- Bristol Energy Smart System Transformation (BESST)
- Replicate Project
- Bristol's Big Energy Conversation
- Warm Up Skill Up – developing community led retrofit with [The C.H.E.E.S.E Project](#) & Anchor organisations Re:Work (South Bristol) & Ambition Lawrence Weston (North Bristol) – \*as part of Energy Learning Zones/Skills Academy
- Energy Learning Zone –supporting Ambition Lawrence Weston develop a sector based energy skill academy
- Supporting CSE develop supply chain <https://www.futureproof.uk.net/>
- Warm Homes Advice and Money [WHAM Project](#) #EndColdHomes
- Warm Up Skill Up – supporting [The C.H.E.E.S.E Project](#) and Re:Work Anchor organisations to develop a community led Retro-fit setting up champions project for 2020
- [Energy Transition 2019 Conference Started Partnership with Bristol Energy Ltd.](#) Enable BEN & BE to co-design Energy Propositions to support Community Led projects & develop community e.g. Wind Turbine – Ambition Lawrence Weston, Owen Square - Easton, CHEESE project, etc





# Working with communities 2018-2019

# No Cold Homes (2



ENERGY  
SERVICE  
BRISTOL



centre for  
sustainable  
energy

talking money  
advice, support & information



We  
Care  
Home Improvements



CHAS  
Housing Advice Service



NHS  
North Bristol  
NHS Trust

WESTERN POWER  
DISTRIBUTION  
*Serving the Midlands, South West and Wales*

Bristol Health  
Partners

BRISTOL  
energy

Bristol Clinical Commissioning Group



Improving mental  
health for all

NHS  
BRISTOL  
ONE CITY



# Organisations we've worked with..



Empowering & Supporting  
Young and Adult Carers

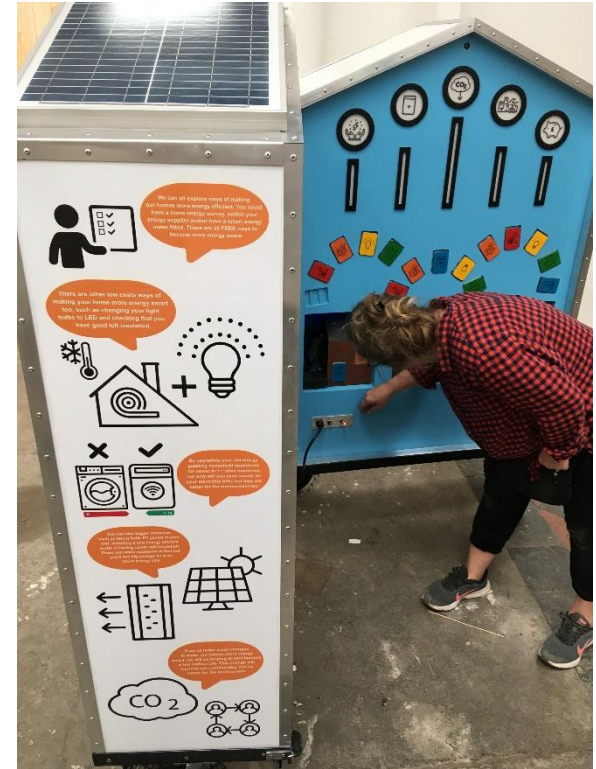




# Champions events and training



# Co-design workshop with KWMC Co-design workshops of #FutureHome & Designed & Built by Mufti Games





# Community Energy? – or local energy?

Partnerships and collaborations:

Neighbourhood groups

Advice centres,

Community Centres

Community Fairs

School Fairs

Informal park gatherings



# Building long-term resilience with our community partners





# Bristol project honoured at national innovation awards



# Bristol Energy Smart System Transformation (BESST)

## **Project Overview**

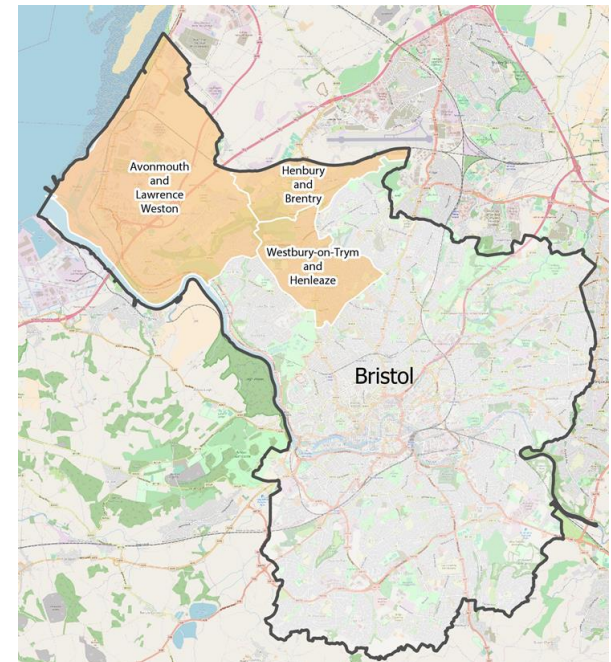


# Industrial Strategy Challenge Fund: Prospering from the Energy Revolution

## Bristol Energy Smart System Transformation (BESST)

The project's goal is to create clusters of smart energy businesses and homes, digitally integrated within a local energy system platform, that will enable the delivery of innovative energy and transport service propositions.

The project is intended to demonstrate how public private investment in replicable local solutions, using digital technology, could transform the UK's energy system to deliver reductions in carbon, pollution and fuel poverty in a healthier more sustainable society.



## 9 Community energy

### Current Situation – What is it like now?

- Fuel Poverty: 70% number of households are struggling with their energy bill<sup>18</sup>
- Approx. 40% of houses are semi-detached, while 28% are terraced and 25% are flats
- Half of homes are owner-occupied, while the majority of the remaining (40%) are social housing. Only a small proportion (5%) are privately rented
- Approx. 41% of homes in Avonmouth and Lawrence Weston could benefit from topping up their loft insulation levels, while a further 30% could be improved by installing cavity wall insulation
- Approx. 23% of properties in the local area require solid wall insulation
- Approx. 33% of homes have been identified as needing gas boiler upgrades
- Approx. 74% of homes would benefit from floor insulation
- Approx. 19% of homes would benefit from installing double glazing
- Approx. 13% of homes may be suitable for heat pumps (i.e. those not on the gas network)
- Approx. 70% of homes have been identified as being suitable for solar PV/thermal panels

70%

number of households  
are struggling with their  
energy bill



### What changes are on the horizon?

NEW HOUSING WILL  
BE DEVELOPED IN  
LAWRENCE WESTON,  
LWPG WILL SEEK  
TO INFLUENCE  
DEVELOPERS TO  
BUILD ENERGY  
EFFICIENT HOMES

- Energy prices are predicted to go up over the coming years increasing pressures on households to manage their energy bills
- New housing will be developed in Lawrence Weston, LWPG will seek to influence developers to build energy efficient homes
- ALW aim to develop retrofit (improve energy efficiency) programme to work alongside Bristol City Council and other providers
- ALW to develop new community owned energy projects, current projects include large scale community wind turbine which aims to generate significant returns for the community and lower energy bills



### How do residents want it to be? – quotes taken from the survey:

- 75% of residents surveyed support the idea of renewable/green energy<sup>19</sup> in principle<sup>20</sup> with 26% not sure as they needed more information
- 70% of residents surveyed said their energy bills cause them financial strain<sup>21</sup>
- 68% of residents surveyed supported our project idea to develop one or more wind turbines in Avonmouth, situated away from residential areas<sup>22</sup>
- 38% of people surveyed said they worry about turning their heating up to keep warm because they fear getting into debt<sup>23</sup>
- 46% of residents surveyed said they would be interested in a CHEESE survey, which uses thermal imaging to understand where and how much heat is being lost in their home<sup>24</sup>



## 9 Community Energy

Action	Description	Who leads, who else?	Possible resources or funding	Timescales	How will we know it has been achieved?
<b>9.1</b> <b>Community Led Renewable Energy</b>	<ul style="list-style-type: none"> <li>• Development of a wind turbine</li> <li>• More renewable energy</li> <li>• Local energy tariff</li> <li>• Heat Networks</li> </ul>	<ul style="list-style-type: none"> <li>• Ambition Community Energy (ACE) CIC</li> <li>• BCC</li> <li>• Bristol Energy</li> <li>• Thrive Renewables</li> <li>• Bristol Energy</li> <li>• Network Community organisations</li> <li>• Severn Enterprise Area</li> <li>• Bristol Port Authority</li> <li>• SevernNet</li> <li>• Local residents</li> </ul>	<ul style="list-style-type: none"> <li>• ACE CIC</li> <li>• External Investment and/or funding</li> <li>• ALW</li> <li>• LWPG</li> <li>• NSCC</li> <li>• BCC</li> <li>• SGCC</li> <li>• Big Local</li> </ul>	<ul style="list-style-type: none"> <li>• 2021 – 2025</li> </ul>	<ul style="list-style-type: none"> <li>• Wind turbine built, new installation of solar panels</li> <li>• Heat network micro grid</li> <li>• Local tariff offered</li> </ul>
<b>9.2</b> <b>Retrofit &amp; New Build</b>	<ul style="list-style-type: none"> <li>• More energy efficient homes and retrofit</li> <li>• Well-designed houses and retrofit measures</li> </ul>	<ul style="list-style-type: none"> <li>• ALW &amp; ACE CIC</li> <li>• BCC</li> <li>• Local developers</li> <li>• Housing associations</li> <li>• Local landlords</li> <li>• Home owners</li> <li>• Bristol Energy Network</li> <li>• CHEESE project</li> <li>• Centre for Sustainable Energy (CSE)</li> <li>• Local residents</li> </ul>	<ul style="list-style-type: none"> <li>• Energy Companies</li> <li>• Obligation – see Bristol flex **</li> <li>• Big Local</li> <li>• Private Rental Sector</li> <li>• Licensing scheme</li> </ul>	<ul style="list-style-type: none"> <li>• 2018 ongoing</li> </ul>	<ul style="list-style-type: none"> <li>• More houses built to higher energy efficiencies standards</li> <li>• More houses with EPC rating C or above</li> </ul>
<b>9.3</b> <b>Energy Learning Zone</b> <i>(see action 4.6)</i>	<ul style="list-style-type: none"> <li>• Raising skill level of residents</li> <li>• Energy internship</li> <li>• Energy events</li> <li>• Workshops</li> </ul>	<ul style="list-style-type: none"> <li>• ALW – ACE CIC</li> <li>• CSE</li> <li>• NBAC</li> <li>• Thrive Renewables</li> <li>• Bristol Energy Network</li> <li>• Schools and training providers</li> <li>• Workplaces and local businesses</li> <li>• CHEESE Project</li> <li>• Local residents</li> </ul>	<ul style="list-style-type: none"> <li>• Low Carbon Gordano</li> <li>• Bristol Energy</li> <li>• CSE</li> <li>• Thrive Renewables</li> <li>• External funding</li> <li>• Big Local</li> </ul>	<ul style="list-style-type: none"> <li>• 2021</li> </ul>	<ul style="list-style-type: none"> <li>• Energy learning zone realised</li> </ul>
<b>9.4</b> <b>Electric vehicles</b>	<ul style="list-style-type: none"> <li>• Encourage take up of electric vehicle charging stations</li> </ul>	<ul style="list-style-type: none"> <li>• Encourage new developments and businesses to include electric charging points as standard</li> </ul>	<ul style="list-style-type: none"> <li>• ACE CIC</li> <li>• BCC</li> <li>• Housing developers</li> <li>• Business developments</li> <li>• LWPG</li> <li>• Big Local</li> </ul>	<ul style="list-style-type: none"> <li>• 2018-Ongoing</li> </ul>	<ul style="list-style-type: none"> <li>• More take up of electrical vehicles</li> <li>• More electric charging points across the community</li> </ul>



ALS is a community led energy group creating new opportunities for social action on energy goals

ALS was created from Ambition Lawrence Weston's energy project in order to reach the whole ward following recent boundary changes, in order to harness the potential in our wider local community.

We're a diverse group of local residents working together to bring a variety of skills and knowledge to the table, increasing capability of our local energy group.

We firmly believe community led action can be more effective than the government alone.

Community groups can help locals access the benefits of changes taking place in the current energy market. We are also exploring the support for a community led wind turbine project away from residential areas.

ALS has now employed three local residents on an energy internship including a volunteer's scheme that will offer free trusted energy advice to local residents such as:

- Advice on switching energy supplier
- Community led wind turbine project
  - Solar panel workshop
- Providing information on renewable energy
- The Cheese project (Cold Homes Energy Efficiency Survey Experts).  
Using thermal imaging to better insulate buildings.



Solar panel workshop



CHEESE  
Check to see if your home is listed on:  
[www.heatview.co.uk](http://www.heatview.co.uk)



Solar panel workshop

Local

Local Trust Big Local



Local Trust Big Local



Our recent event: 'Make Sunday Special' Avonmouth was an opportunity to broaden our engagement with local residents, to gain feedback on energy saving and renewable projects.

Our questionnaire highlighted that 79.2% of our residents are spending too much on their energy bills, and 55.8% are finding it a financial strain.

98.1% of our residents support renewable energy and 96.2% supported our proposed community owned wind turbine.

Lawrence Weston held an identical questionnaire this mirrored that of Avonmouth's.

We will be hosting an energy stall during the Big Energy Savings fortnight on the 27th October for the Apple day event at Lawrence Weston Community Farm from 1-4PM.

This will be an opportunity for residents to come along to our pop up shop to find out how much could be saved on energy bills. You will be given free trusted advice from the group on switching to the best energy supplier.

We welcome residents who wish to be part of this fantastic growing group, we offer a flexible volunteer scheme that will support and train individuals, providing a wealth of knowledge, experience and transferable skills, thus enhancing future career opportunities.

For more information on the Big Energy Savings fortnight please visit:

[www.bigenergysavingweek.org.uk](http://www.bigenergysavingweek.org.uk)

For more information on our group and it's activities you can follow us on twitter:

[www.twitter.com/ALS\\_EnergyGroup](https://twitter.com/ALS_EnergyGroup)

You can also contact us by email [als.community.energy@gmail.com](mailto:als.community.energy@gmail.com) or by phone 07846057470



Make Sunday Special







